

Hilltop Ridge *at Washington Park*



Luxury for Less

22A Country Club Drive • Manchester, NH 03102
(603) 669-8400
www.CPMproperties.net

Your Residence at Hilltop Ridge

LOCATION, LUXURY AND COMFORT COMBINE FOR HASSLE FREE COMMUNITY LIVING!

Offering the most spacious floorplans in our price range, Washington Park is set on acres of beautifully landscaped grounds and features a host of included amenities.

Relax in the inviting clubhouse, enjoying a game of billiards or surfing the Internet. Work out with the cardio and strength training equipment in our new fitness center. Soak up the sun and cool off in one of the sparkling pools. Enjoy a friendly game of basketball or tennis. Indulge your youth at the playground. Take pleasure in the exceptional golf course and river views.

Hilltop Ridge is truly Luxury Apartment living for less! And the ideal choice to make your home!



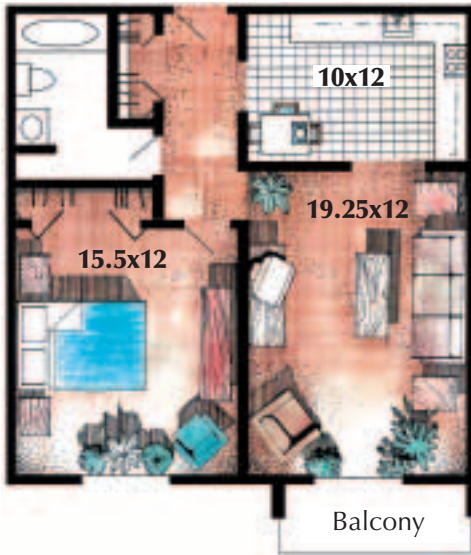
Your Community & Neighborhood

- Minutes from Routes 93, 293 and downtown Manchester
- Country setting with beautifully manicured grounds
- 24-hour maintenance and on-site management
- New clubhouse with billiards, computer rooms, large screen TV and more
- Off-street parking
- New fitness center equipped with cardio and strength training apparatus
- 2 pools
- 4 tennis courts
- Barbecue grills and picnic areas
- Evening courtesy patrol
- Laundry rooms in each building
- Playground
- Spectacular views of golf course and river
- Public transportation access
- Basketball court



Hilltop
Ridge
at Washington Park

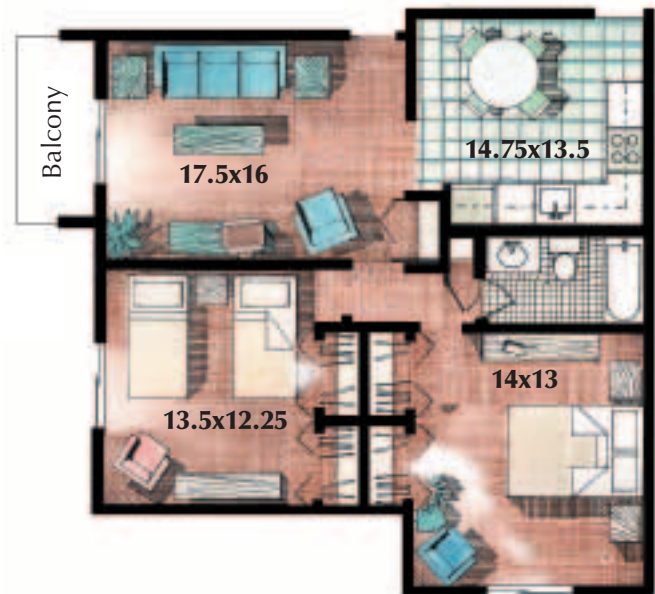




One Bedroom Deluxe

750 Sq. Ft.

\$ _____



Two Bedroom Deluxe

975 Sq. Ft.

\$ _____



Two Bedroom Luxury

1050 Sq. Ft.

\$ _____

All measurements are approximate.

Hilltop Ridge *at Washington Park*



Your Apartment Home

- Fully applianced kitchens: Sound reduced dishwashers, disposals, frost-free refrigerators and continuous cleaning ovens.
- Spacious, home-style floorplans
- Premium Berber carpeting
- No-wax vinyl floors
- Generous closet space
- Private patios and balconies
- Air conditioning
- Neutral decor
- Included heat, hot water, cooking gas and cable TV service
- Attic storage
- Individual heat control
- Sliding glass doors and extra large windows
- Smoke detectors and fire wall
- Excellent soundproofing for privacy and serenity
- Limited access buildings with intercom system



Enjoy your new apartment home at Hilltop Ridge!



CONSTRUCTION PLANNING & MANAGEMENT INC.

Family of Luxury Apartment Communities

**The Highlands at
Washington Park**
22A Country Club Dr.
Manchester, NH
(603) 669-8400



**Colonial Village
of Manchester**
130 West Clarke St.
Manchester, NH
(603) 669-1193



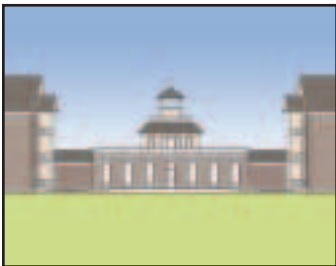
**Colonial Village
of Massachusetts**
1 Independence Dr.
Methuen, MA
(978) 685-1914



**Greenview
Village**
60 Greenview Dr.
Manchester, NH
(603) 644-7070



CONSTRUCTION PLANNING AND MANAGEMENT, a family owned and operated business, has been a leading builder, developer, and manager of luxury residential communities for over 35 years. Our family of properties are known for their quality construction, spacious floorplans, attractive landscaping, premium amenities, and unequaled service. Your ideal place to call home.



Regency Place
1370-1400 Front Street
Manchester, NH
(603) 644-3549



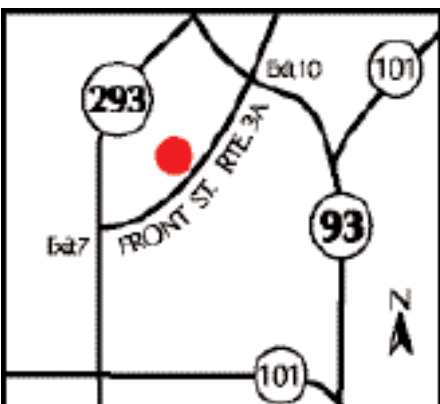
Regency North
490 River Road
Manchester, NH
(603) 669-1193



Regency Heights
59 Old Hackett Hill Road
Manchester, NH



Regency West
1850 Front Street
Manchester, NH
(603) 644-7070



Directions to Hilltop Ridge

Located on Country Club Drive, just off Front Street (Route 3A).
From Interstate 93 take exit 10 and proceed South 1.5 miles.
Washington Park will be on your right hand side.
From Interstate 293, take exit 7. Proceed 1 mile and Country Club Drive will be on your left hand side.

www.CPMproperties.net

