

# *the Highlands*

*of Washington Park*



*Exclusive 1 & 2 Bedroom Apartment Homes*

22A Country Club Drive • Manchester, NH 03102

**(603) 669-8400**

[www.CPMproperties.net](http://www.CPMproperties.net)

# Your Residence at The Highlands

THE HIGHLANDS OF WASHINGTON PARK OFFERS YOU 1 & 2 BEDROOM HOMES OF DISTINCTION!



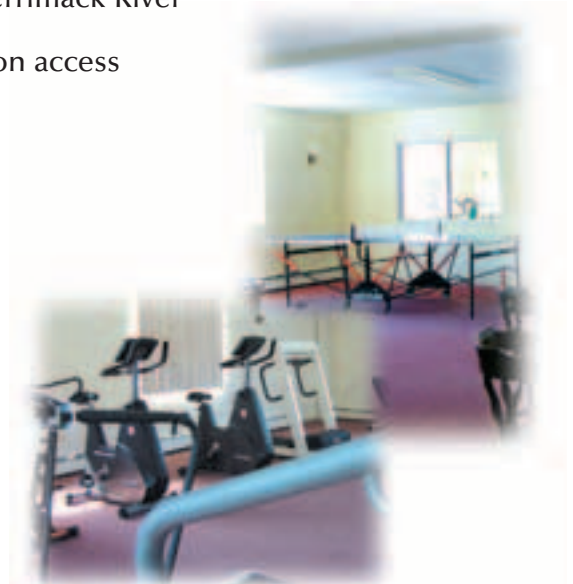
*Separated from the other communities in Washington Park, The Highlands provides you with upgraded interior appointments and unique amenities. Located within minutes of 93, 293 and downtown Manchester, The Highlands provides you with convenience!*

*Relax in the inviting clubhouse and enjoy a game of billiards or table tennis. Work out with the cardio and strength training equipment in the fitness center. Stroll the grounds and enjoy the beautifully manicured landscaping and spectacular views. Soak up the sun or cool off in one of the sparkling pools. Take part in a friendly game of tennis or basketball. Reclaim your youth at the playground...*

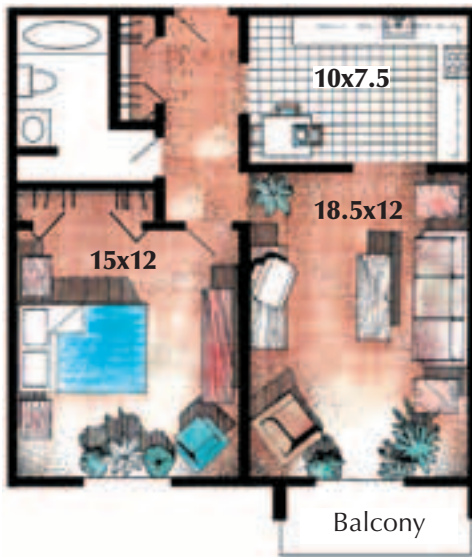
*The Highlands affords the best of community living. Enjoy the spacious apartment homes of the Highlands. Enjoy the lifestyles and conveniences of Washington Park. Make your new home in The Highlands.*

## Your Community & Neighborhood

- Minutes from 93, 293 and downtown Manchester
- Country setting with beautifully manicured grounds
- 24-hour maintenance and on-site management
- Clubhouse with billiards, table tennis and more
- Ample off-street parking
- Fitness center equipped with cardio and strength training apparatus
- 2 pools
- 4 tennis courts
- Barbecue grills and picnic areas
- Courtesy patrol
- Quarterly resident social events
- Fully equipped laundry rooms
- Playground
- Spectacular views of the golf course and Merrimack River
- Public transportation access
- Basketball court
- Car ports
- Elevators



*the Highlands*  
of Washington Park



**One Bedroom Deluxe**

750 Sq. Ft.

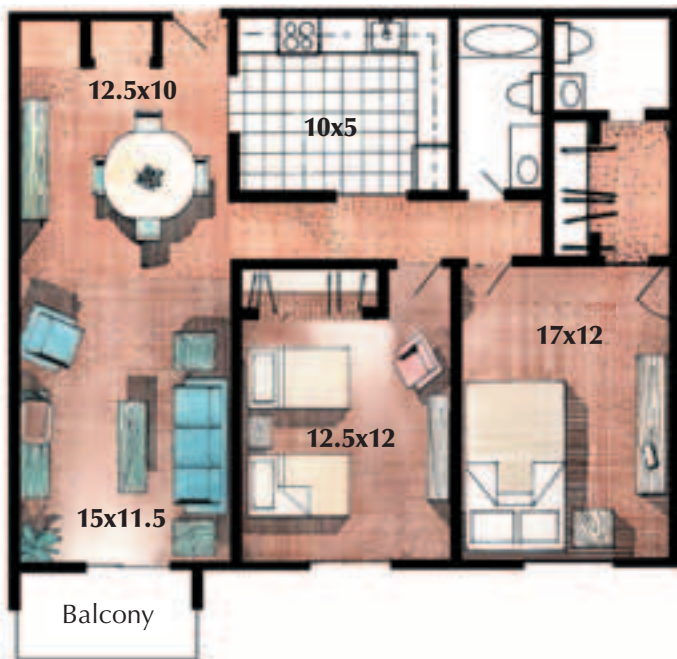
\$ \_\_\_\_\_



**Two Bedroom Deluxe**

975 Sq. Ft.

\$ \_\_\_\_\_



**Two Bedroom Luxury**

1100 Sq. Ft.

\$ \_\_\_\_\_

*All measurements are approximate.*

# the Highlands Community

of Washington Park



- Hilltop Ridge
- River View
- Highlands
- Management Office/Clubhouse

# *the Highlands*

*of Washington Park*



## *Your Apartment Home*

- Spacious, home-style floorplans
- Fully-applianced kitchens with sound-reduced dishwashers, disposals, frost-free refrigerators, continuous cleaning ovens and raised panel oak cabinets.
- Premium Berber carpeting
- No-wax vinyl flooring
- Generous closet space
- Private patios and balconies
- Air conditioning
- Well-appointed with neutral decor
- Included heat, hot water and cable TV service
- Washable wallpaper in kitchens and baths
- Attic storage
- Individual heat control
- Sliding glass doors and extra large windows
- Smoke detectors and fire wall
- Excellent sound-proofing to ensure your privacy and serenity
- Limited access buildings with intercom system



*Enjoy your new apartment home at The Highlands!*



# CONSTRUCTION PLANNING & MANAGEMENT INC.

## *Family of Luxury Apartment Communities*

**Hilltop Ridge  
at Washington Park**  
22A Country Club Dr.  
Manchester, NH  
(603) 669-8400



**Riverview at  
Washington Park**  
22A Country Club Dr.  
Manchester, NH  
(603) 669-8400



**Regency  
West**  
1850 Front Street  
Manchester, NH  
(603) 644-7070



**Greenview  
Village**  
60 Greenview Dr.  
Manchester, NH  
(603) 644-7070



CONSTRUCTION PLANNING AND MANAGEMENT, INC., a family owned and operated business, has been a leading builder, developer, and manager of luxury residential communities for over 35 years. Our family of properties are known for their quality construction, spacious floorplans, attractive landscaping, modern amenities, and unequalled service – making them your ideal place to call home.



**Pine Hill  
Gardens**  
Mt. Vernon and  
Beacon Streets  
Lawrence, MA  
(978) 685-1914



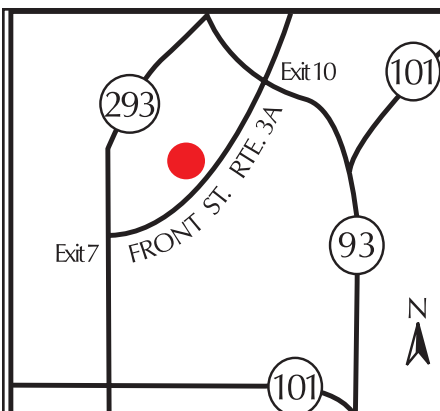
**Regency  
North**  
490 River Road  
Manchester, NH  
(603) 669-1193



**Colonial Village  
of Massachusetts**  
1 Independence Dr.  
Methuen, MA  
(978) 685-1914



**Colonial Village  
of Manchester**  
130 West Clarke St.  
Manchester, NH  
(603) 669-1193



### Directions to The Highlands

Located on Country Club Drive, just off Front Street (Route 3A). From Interstate 93 take exit 10 and proceed South 1.5 miles. Washington Park will be on your right hand side. From Interstate 293, take exit 7. Proceed 1 mile and Country Club Drive will be on your left hand side.

[www.CPMproperties.net](http://www.CPMproperties.net)

