

Colonial Village



*Luxury Apartment Homes
in Manchester's Prestigious North End*

130 West Clarke Street #2 • Manchester, NH 03104

(603) 669-1193

www.CPMproperties.net

Your Residence at Colonial Village

WELCOME TO LUXURY COMMUNITY LIVING AT COLONIAL VILLAGE

Set on the grounds of a historical estate on the banks of the Merrimack River, Colonial Village blends old-world charm with modern luxury and convenience. Just remodeled with brand new kitchens, these exceptional apartment homes have been carefully carefully prepared for your arrival.

Relax in the enchanting clubhouse, located in the estates former carriage house. It is a focal point of our truly special apartment community. Work out with cardio and strength training equipment in our fitness center. Stroll the grounds and admire the carefully preserved, century-old shrubs and trees. Benefit from the recreational facilities, pools, and playground. Take pleasure in the exceptional river views.

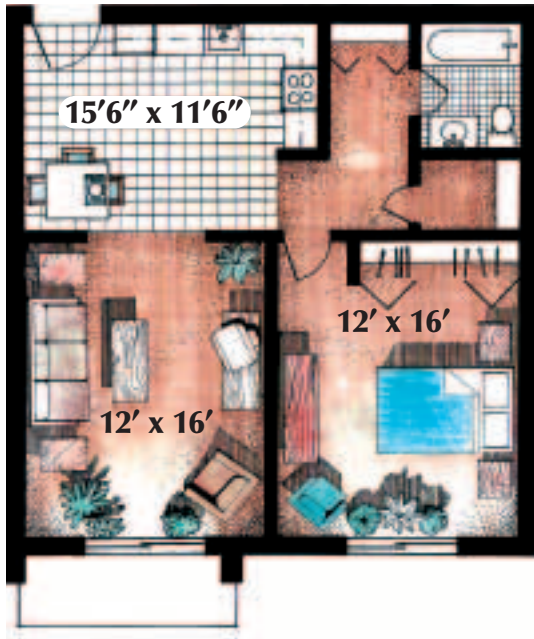
Features & Amenities

YOUR COMMUNITY & NEIGHBORHOOD

- Convenient location within minutes of I-93, I-293 and downtown Manchester
- 24-hour maintenance and on-site management
- Just-remodeled clubhouse with billiards, foosball, card tables, large screen t.v., reading library and more
- Ample off-street parking
- State-of-the-art fitness center equipped with cardio and strength training apparatus.
- Two pools
- Two tennis and basketball courts
- Designated non-smoking buildings
- Evening courtesy patrol
- Fully equipped laundry rooms
- Playhouse and Playground
- Amazing river views
- Bright outside lighting for your comfort and convenience
- Country setting with beautifully manicured grounds

Colonial  Village

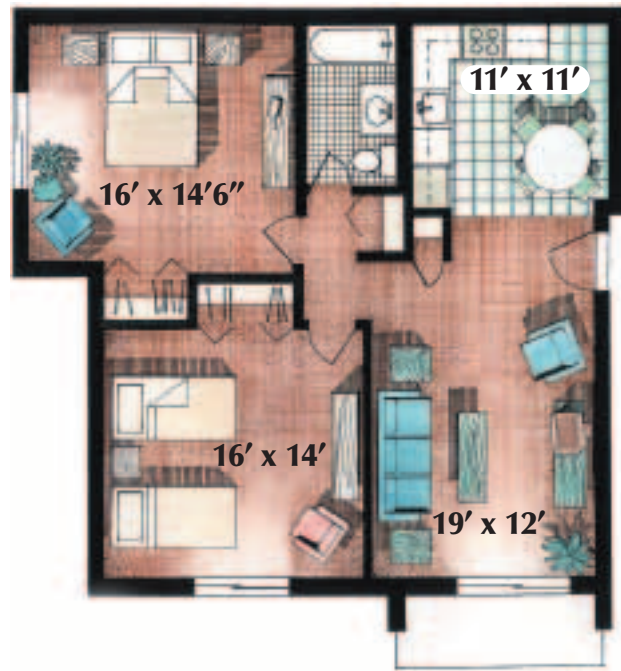




One Bedroom Luxury

750 Sq. Ft.

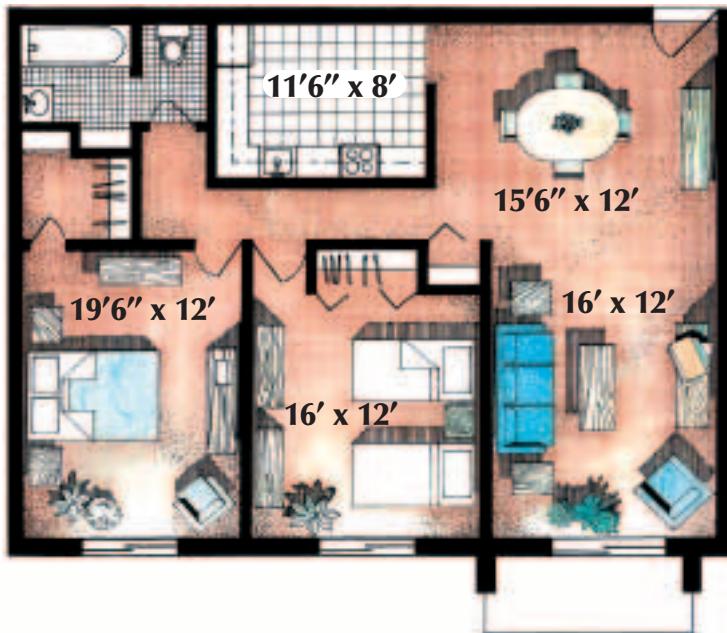
\$ _____



Two Bedroom Deluxe

980 Sq. Ft.

\$ _____



Two Bedroom Luxury

1130 Sq. Ft.

\$ _____

All measurements are approximate.

The Colonial Village Community



Colonial Village

Your Apartment Home



- Spacious, home-style floorplans with neutral decor
- Included utilities: heat, hot water and house cable
- Brand-new fully applianced kitchens featuring beautiful hardwood cabinets and premium whirlpool appliances
- Oversize bedrooms
- Premium Berber carpeting
- No-wax vinyl flooring
- Generous closet space
- Private patios and balconies
- Air conditioning
- Attic storage at no extra cost
- Sliding glass doors and extra large windows
- Included window treatments
- Excellent sound-proofing to ensure your privacy and serenity



*Enjoy your new apartment home
in Colonial Village!*



CONSTRUCTION PLANNING & MANAGEMENT INC.

Family of Luxury Apartment Communities

**The Highlands at
Washington Park**
22A Country Club Dr.
Manchester, NH
(603) 669-8400



**Hilltop Ridge
at Washington Park**
22A Country Club Dr.
Manchester, NH
(603) 669-8400



**Colonial Village
of Massachusetts**
1 Independence Dr.
Methuen, MA
(978) 685-1914



**Greenview
Village**
60 Greenview Dr.
Manchester, NH
(603) 644-7070



CONSTRUCTION PLANNING AND MANAGEMENT, a family owned and operated business, has been a leading builder, developer, and manager of luxury residential communities for over 35 years. Our family of properties are known for their quality construction, spacious floorplans, attractive landscaping, premium amenities, and unequaled service. Your ideal place to call home.

OPENING
SPRING
2005



Regency Place
1370-1400 Front Street
Manchester, NH
(603) 644-3549



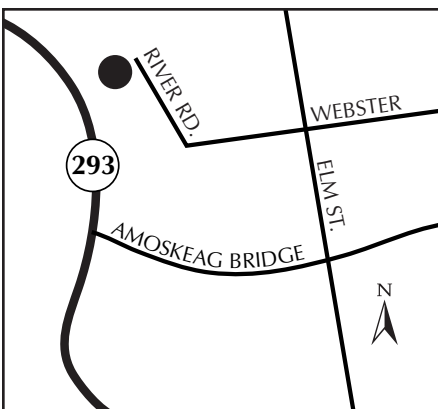
Regency North
490 River Road
Manchester, NH
(603) 669-1193



Regency Heights
59 Old Hackett Hill Road
Manchester, NH
(603) 644-7070



Regency West
1850 Front Street
Manchester, NH
(603) 644-7070



Directions to Colonial Village

Located on West Clarke Street and West River Drive, just off River Road. Take Interstate 93 to Interstate 293 to exit 6. Go over the Amoskeag Bridge, and take a left at the lights at Elm Street. At the first set of lights, take a left on Webster Street. Take a right at the lights on River Road. Colonial Village is half mile on the left-hand side.

www.CPMproperties.net

