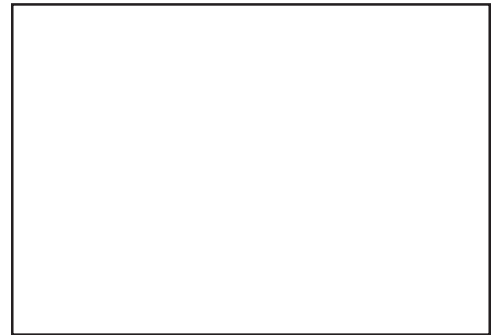
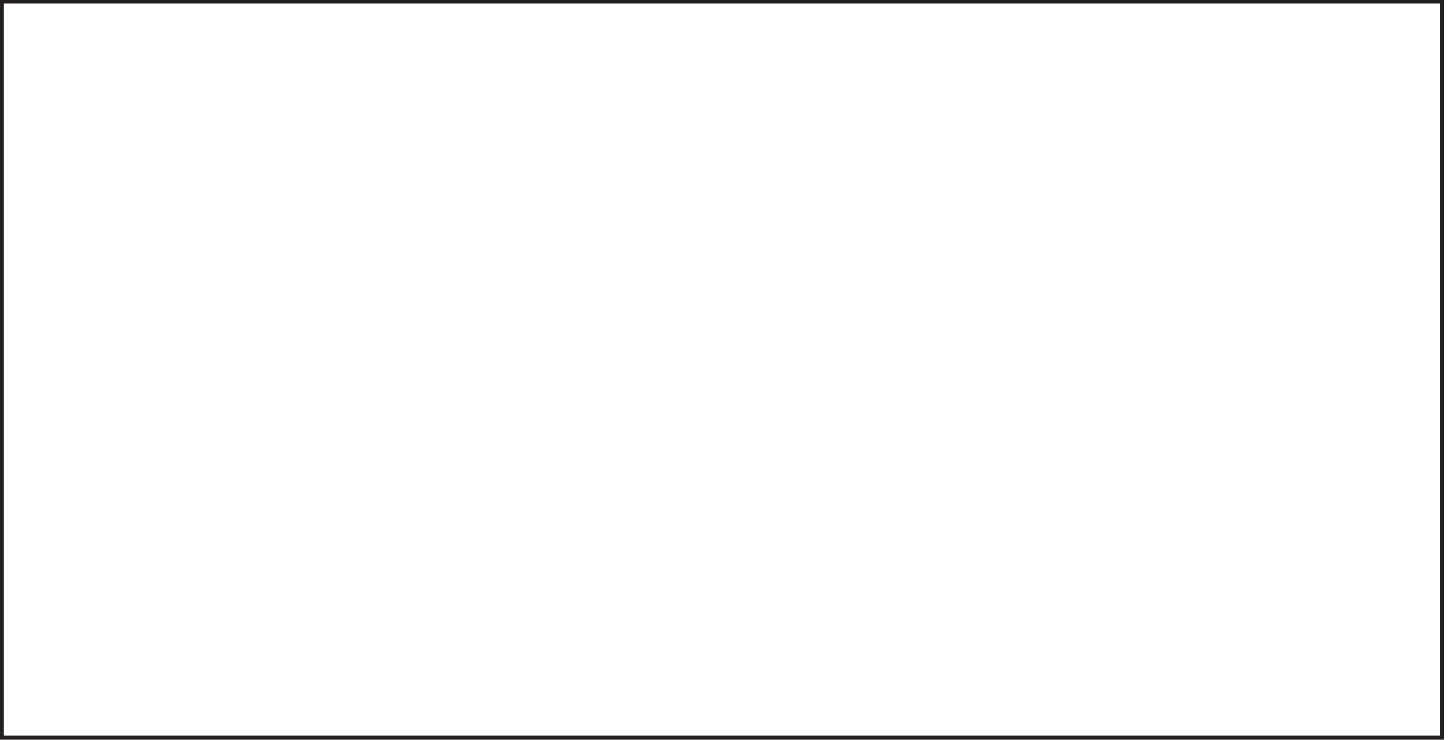


Colonial Village

in Methuen



*Spacious, Newly Remodeled 1- & 2-Bedroom
Apartment Homes*

27 Independence Drive
Methuen, MA 01844
(978) 685-1914

www.CPMcommunities.com



Convenient, Luxury Community Living at Colonial Village



Nestled in residential Methuen, Colonial Village's attractive grounds and buildings provide a perfect setting for your home. The apartments are luxuriously appointed and spacious! The proximity to Routes 93, 495 and 213 makes Colonial Village more than convenient!

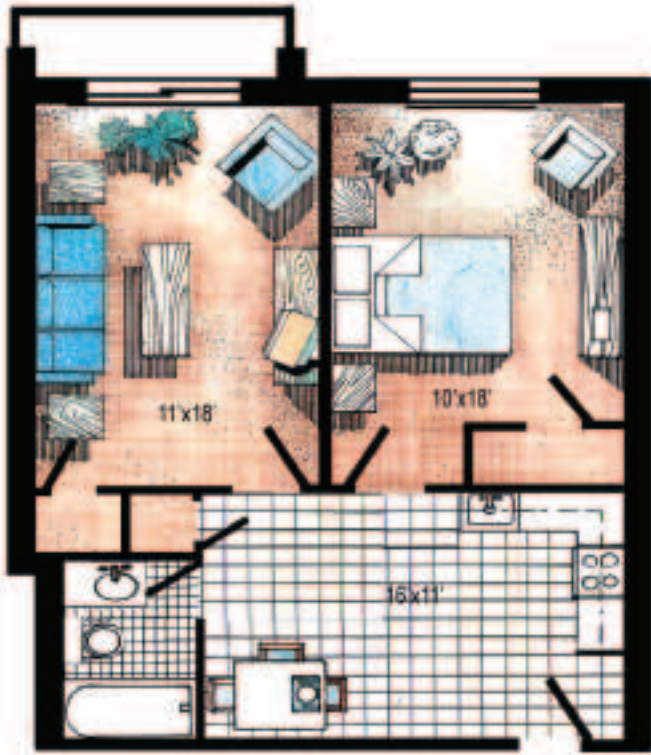
This delightful community is composed of 144 charming apartment homes recently remodeled with a brand new kitchen. The six buildings are surrounded by beautifully manicured gardens and are flanked by the fitness center, pool, tennis courts and picnic areas.

Come enjoy the convenience and luxury! Join Colonial Village today and experience the best in community living!

Your Community & Neighborhood

- Residential neighborhood within minutes of Interstates 93 & 495
- Brand new community center (2005) with resident lounge, billiards, game tables and computer center
- Limited access buildings with lobby cameras
- Professional on-site management
- 24-hour maintenance
- New state-of-the-art fitness center equipped with cardio and strength training apparatus
- Sparkling swimming pool
- Designated non-smoking buildings available
- Tennis courts
- Barbecue grills and picnic area
- Brand new playground
- Fully equipped laundry rooms
- Ample off-street parking
- Beautifully manicured gardens & grounds
- Convenient to public transportation and "The Loop" shopping, dining and entertainment center





One Bedroom Luxury

750 Sq. Ft.

\$ _____

Two Bedroom Luxury

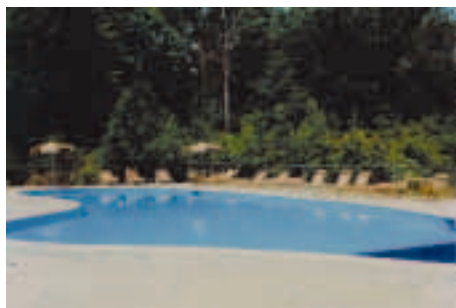
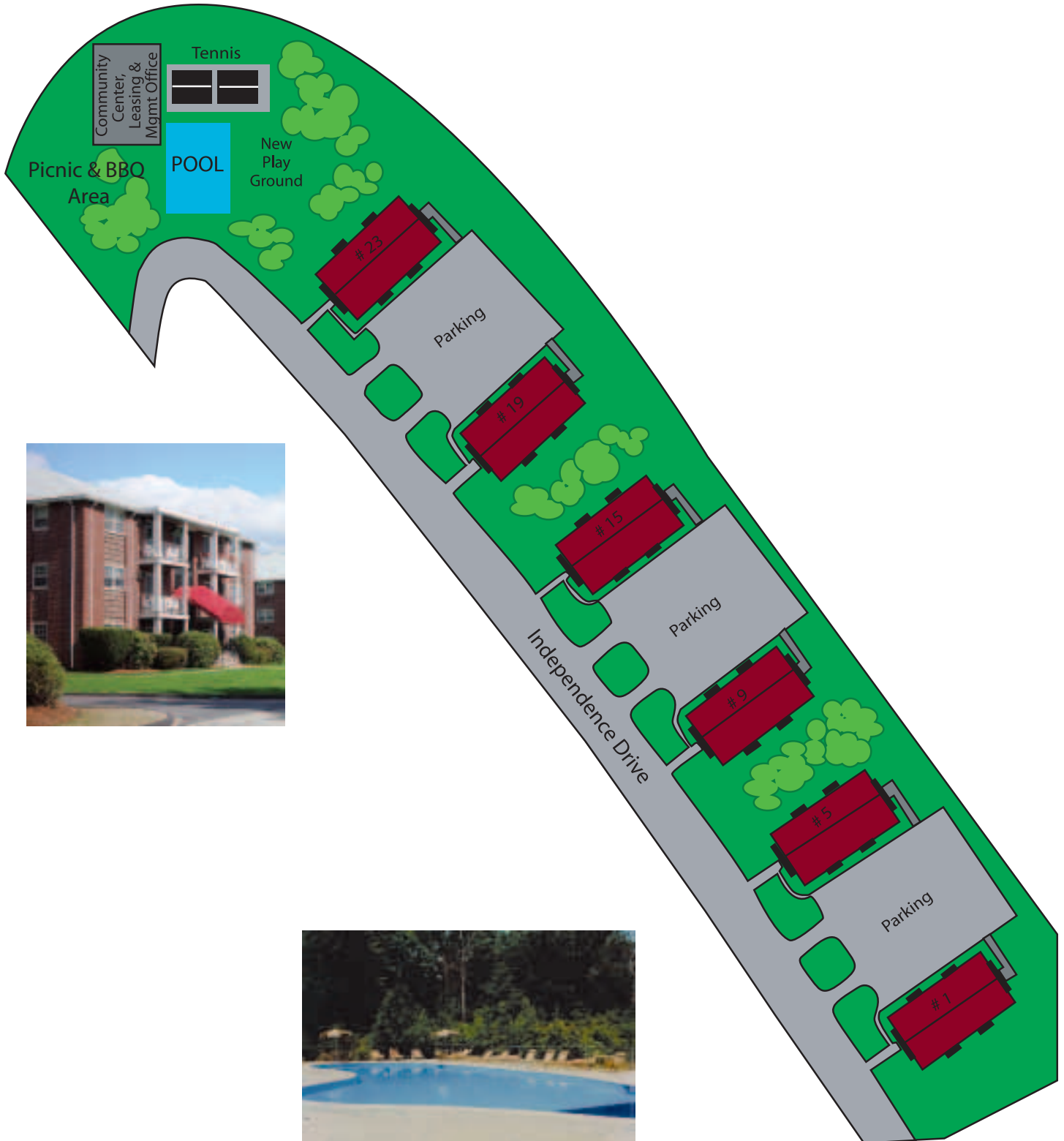
850 Sq. Ft.

\$ _____



All measurements are approximate.

The Colonial Village Community



Colonial Village

Your Apartment Home

- Just remodeled with brand new kitchens and flooring
- Heat and hot water included
- Premium Whirlpool appliances: sound-reduced dishwashers, disposals, frost-free refrigerators, continuous cleaning conventional ovens and microwaves
- Washable wallpaper in kitchen & bath
- Spacious floor plans
- Premium Berber carpeting
- No-wax vinyl flooring
- Generous closet space
- Air conditioning
- Neutral décor
- Attic storage
- Window treatments

*Enjoy your new apartment home
in Colonial Village!*



CONSTRUCTION PLANNING & MANAGEMENT INC.

Family of Luxury Apartment Communities

**Hilltop Ridge
at Washington Park**
22A Country Club Dr.
Manchester, NH
(603) 669-8400



**The Highlands at
Washington Park**
22A Country Club Dr.
Manchester, NH
(603) 669-8400



**Colonial Village
of Manchester**
130 West Clarke St.
Manchester, NH
(603) 669-1193



**Greenview
Village**
60 Greenview Dr.
Manchester, NH
(603) 644-7070



CONSTRUCTION PLANNING AND MANAGEMENT, a family owned and operated business, has been a leading builder, developer, and manager of luxury residential communities for over 35 years. Our family of properties are known for their quality construction, spacious floorplans, attractive landscaping, premium amenities, and unequaled service. Your ideal place to call home.



Regency Place
1370-1400 Front Street
Manchester, NH
(603) 644-3549



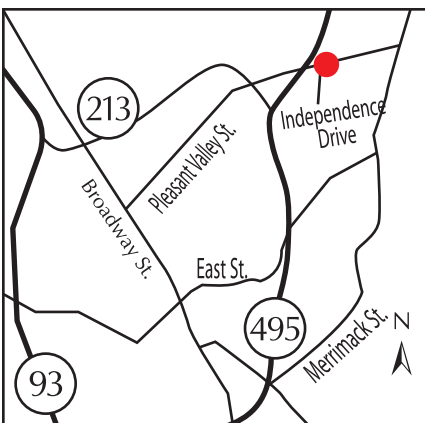
Regency North
490 River Road
Manchester, NH
(603) 669-1193



Regency Heights
59 Old Hackett Hill Road
Manchester, NH



Regency West
1850 Front Street
Manchester, NH
(603) 644-7070



Directions to Colonial Village

Colonial Village is located in a residential Methuen neighborhood, just off the Loop Connector.

Take Route 495 or 93 to Route 213 West. From 213 West take Pleasant Valley St., Exit 4. At the end of the exit ramp, take a Left. Colonial Village is approximately 1 mile on the right.

Our Leasing Office is located in the Community Center at the end of Independence Drive.

(978) 685-1914

www.CPMcommunities.com

